



From the Chair...

As the 2015 United Nations Climate Change Conference gets closer there is a continuing need to provide awareness about the issues around climate change and what we as a population can do to lessen our impact.

This means that the work of organisations like CAfS is more important than ever, and over the year we have again grown both in terms of staff and our strategic direction and governance.

Our 2015-2020 business plan outlines how we intend to deliver our work in areas where our skills and influence can make a real difference. We plan to extend our reach across Cumbria, securing funding to build on the projects delivered through our current Sustain Eden programme. We'll also continue to work in partnership with other organisations to further this work, as well as that on wider emissions reduction.

Priority income generating activities include developing our training programme, home energy assessments, environmental consultancy and practical project delivery for housing associations and local authorities.

We will use our experience and reputation to strategically influence projects and funding to ensure sustainability and low carbon activity is integrated from the outset.

Peter Clarke
Peter Clarke | Chair of Trustees

This is us... The Board of Trustees

Chair
Peter Clarke

Treasurer
David Horn

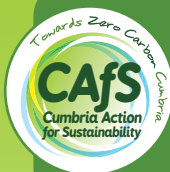
Vice Chair
Tim Maiden

Karen Bowen

Collette Butterworth

Richard Scott

With thanks to Phil Davies and Alex Burgess for their work during 2014/15



Our mission is to promote low carbon living, energy saving and reduced use of fossil fuels throughout Cumbria; we provide information, advice and motivation through events, site visits and practical projects

CAfS Priorities for 2015 /16

For the first time we have developed a long term business plan, which identifies the priorities for CAfS to 2020. In 2015/16 our work will primarily focus on projects that help deliver the following priorities.

Domestic Energy: We wish to remain the first point of reference in Cumbria for information on domestic energy and the lead organisation on projects in this area of emission reduction. This is a core area of our expertise and we have had measurable success of making an impact. We believe that a significant shift is required in Cumbria, including changes to planning, design and construction of domestic buildings. We want to work with partners where they can contribute skills, knowledge or contacts.

Community Energy: We want to provide a comprehensive support package to community groups across Cumbria using a range of funding mechanisms. Our target is to significantly increase the community-owned renewable energy capacity of Cumbria over the next five years, and to work with partners where needed to help us deliver this.

Motivating Behaviour Change - Climate Change Education: Climate change awareness will be included in some form in all of our projects. We will develop training sessions for a range of audiences from children to adults, and particularly want to include tradespeople, local politicians and decision makers. We understand that climate change may not be a motivator for many people, but we aim to ensure that everyone has access to clear, accessible information about climate change causes and impacts, should they wish to find them. We want to work with partners, particularly transition groups, where they can contribute skills, knowledge or contacts.

Our full business plan priorities can be found at www.cafs.org.uk/about-us/annual-report



For more information on our work, see www.cafs.org.uk and sign up to our newsletter.

Over the past year, we've enjoyed working with...

Home Energy

Our flagship **Cumbria Green Build Festival** took place for the ninth time. Nearly 30 events were held covering a wide range of renewable energy installations, energy efficiency and traditional retrofit. In Spring 2014 we also delivered the **Cumbria Green Open Homes** project, with 34 open homes in total. Between the two projects we had over 1000 visitors to open home events!

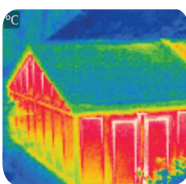
↑ We created a **draught proofing service**, partnering with Eden Housing Association, training them to assess homes and install draught proofing and other energy saving improvements. Over 60 homes have benefitted from this free service to date, with excellent feedback from householders. We've also delivered **Draught Proofing Workshops**.

↑ We've given energy saving and switching advice to over 250 people at **Energy Saving Advice Sessions** in Penrith, Appleby, Alston, Kirkby Stephen, Ambleside, Coniston, Kendal, Ulverston, Arnside, Staveley, Workington, Bolton, Kendal & Whitehaven. We also delivered eight **events to front line** employees advising clients on ways to cut energy bills by comparing and switching tariffs and identifying draughty homes.

↑ We launched our **home energy advice visit service**, developing a new partnership with Riverside Housing Association. We coordinated visits to 90 homes to give tailored energy advice, covering issues including energy efficient behaviour, effective use of heating systems, fuel bill tariffs and switching. We also organised a tenants meeting focussing on pros and cons of external wall insulation, and produced an energy-saving newsletter for residents.

↑ We carried out **thermal imaging surveys** and linked up householders and communities with local **Green Deal Assessors** and **energy auditors** for community buildings to provide information on reducing energy consumption.

↑ We worked with the Department of Energy & Climate Change to host two **Renewable Heat Incentive (RHI) Roadshows** in July and November 2014, reaching a further 140 people.



Community groups in the Eden area continue to receive **support and advice** through the Sustain Eden programme to help them pursue their aspirations for their communities. Communities we have supported this year include Kirkby Thore, Pooley Bridge, Matterdale, Greystoke and Temple Sowerby.

↑ We have continued our work with the **Rural Cumbria Connects** consortium and have been working with the communities in Bootle, Brampton and Wigton who have all secured funding from the Rural Community Energy Fund for feasibility work in their areas.

↑ Working with the Lake District National Park and CLASP on the **Lake District Low Carbon Energy Futures Project**, we have developed a 3D architectural model showing a wide range of renewable energy and energy efficiency technologies in a 'typical' Lake District valley setting. We have also worked with communities in Staveley and around Ullswater to help them identify the opportunities for energy projects in their area, seek the views of the community, and bring together action plans to enable groups to access additional funding and support.

↑ We have secured a new contract with South Lakeland District Council to **support ten communities** with energy projects in 2015/16.

↑ In January 2015 we organised and hosted the first **Cumbria Community Energy Conference**. This event saw 67 people from across the county hear from a range of speakers who shared their own experiences of what it was like to be involved in a community energy project, whilst also learning about sources of funding and support, consents required and energy efficiency in community buildings.

↑ CAfS has established **Community Energy Cumbria**, an IPS BenComm which is currently developing its first two projects – a hydroelectric scheme at Killington Reservoir and a solar PV scheme on the roof of offices at Murley Moss.



Towards Zero Carbon Cumbria

CAfS

Cumbria Action for Sustainability



Working in partnership

CAfS is the lead partner in the **Sustain Eden** programme, which aims to help the Eden community reduce the causes, and adapt to the effects, of climate change. Working with ten partners, the programme encourages people and businesses to use less energy and adopt sustainable energy sources; improve access to local services; and make better use of resources that occur naturally, like water, land, wind and woodland, to meet our needs. In addition to our draughtproofing, Green Build and Sustainable Community Solutions activities outlined above, our partners have undertaken a wide range of activities, including:

↑ **Cumbria Woodlands' community 'chop-your-own' woodlands** with 26 people regularly involved in work days at the Morland and Ullswater sites, and partnerships established with the National Trust and a private woodland owner.

↑ **Alston Moor Partnership** who have established four electric bike hire points, got a community bus up and running and begun a feasibility study into hydro power.

↑ **PACT's Tree Whisperers project** which has worked with 583 pupils at nine schools to date.

↑ **The Freegle project** which has surpassed its target of online exchange of excess produce and gardening items, reaching 507 people, as well as supporting a further 274 people to grow their own fruit and veg, through various events, including a series of Visiting Edible Garden visits.

↑ **CREA's resource efficiency work** which has now worked in depth with 88 businesses, including seven farms.

↑ **Cumbria CVS and ACT's resilience work** which has informed 170 community workers; helped eight organisations; two communities and 400 carers develop emergency plans.

↑ **Opt4 Community Energy** who provided switching and energy advice to 407 people, saving Cumbrians an estimated £43,494.



Other Bits and Pieces...

- In March 2014 we worked with Greenpeace to host an event on **Lobbying & Influencing Training** for 20 delegates
- At last year's AGM in July 2014, over 50 people came and sampled a range of **speed workshops** from our Sustain Eden project.
- Two of our staff met with the **MP for Civil Society** to highlight the work happening in the charity sector and we've briefed councillors in Eden on the work of the Sustain Eden programme.
- In October 2014 CAfS began work with Impact Housing Association to support the development of its **sustainability policy** and improve its environmental performance.
- We hosted the **Time to Act! On Climate Change** event in October 2014. 70 delegates attended to hear the vice-president of the Campaign Against Climate Change, Suzanne Jeffrey, speak about the One Million Climate Jobs campaign.
- In the Autumn we worked with the **Society for Protection of Ancient Buildings** to promote their national conference in Carlisle, entitled 'Energy Efficiency in Traditional Buildings', which we also attended, giving advice to delegates.
- We won second prize in NCVO's **Winifred Tumim Memorial Prize** for best practice in charity governance.
- Our staff were elected to the two **Local Action Groups in Cumbria** for the LEADER programme, and will help to make decisions on this source of EU funding over the next five years.
- We continue to work with partners to develop projects that deliver our aims going forward. We are actively **pursuing funding** from a wide variety of sources, including the EU funds, various trusts and grant funds, and further contract work.
- Over the course of the year we've recruited three new **trustees** – Richard Scott, Collette Butterworth, and Karen Bowen who have added to the expertise of our existing board.
- Phil Davies, one-time CAfS employee and a trustee ever since, was recruited as Environmental Services Manager. We've also recruited Nancy Evans as Home Energy Efficiency Officer, and Sarah Burrough as Marketing Officer.

